



"WE MAKE THE KITCHEN BETTER!"

ATOSA USA, INC.

Toll Free: 855-855-0399 Email: info@atosausa.com

www.atosa.com | www.atosausa.com

California, Colorado, Florida, Georgia, Illinois,
New Jersey, Ohio, Texas, Washington

MODELS:
ATHOM-28 / ATHOM-39 / ATHOM-60

Open Air Merchandisers

Standard Features

- Black exterior & stainless steel interior
- Digital temperature controller and display
- Maintains temperatures between 33 °F to 40 °F
- Glass side and front panels
- LED interior lighting under shelf and interior top
- One stainless steel shelf and one floor shelf
- Pre-installed casters

Optional Accessories

- Top Mount Dry Display Case



ATHOM-28



ATHOM-39



ATHOM-60

For the best results of food preservation we recommend setting your refrigerator between 33°F to 38 °F

1. Don't forget to leave the unit some room to breathe!
2. Please clean the condenser frequently to give the unit more fresh air.



2 YEAR PARTS AND LABOR WARRANTY
5 YEAR COMPRESSOR PART WARRANTY





"WE MAKE THE KITCHEN BETTER!"

ATOSA USA, INC.

Toll Free: 855-855-0399 Email: info@atosausa.com

www.atosa.com | www.atosausa.com

California, Colorado, Florida, Georgia, Illinois,

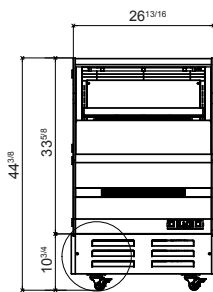
New Jersey, Ohio, Texas, Washington

SPECIFICATIONS

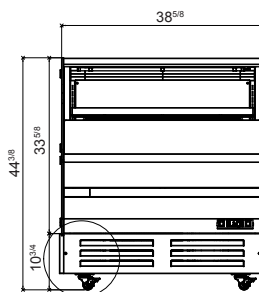
| Models | Capacity (Cu.Ft.) | Voltage (V/Hz/Ph) | HP | Refrigerant | NEMA Plug | Exterior Dimensions (inch) | Packaging Dimensions (inch) | Shelf Dimensions (inch) | Net Weight (lbs) | Gross Weight (lbs) |
|----------|-------------------|-------------------|-----|-------------|-----------|--|--|-------------------------|------------------|--------------------|
| ATHOM-28 | 4.1 | 115/60/1 | 3/5 | R290 | 5-15P | 26 ^{13/16} ×34 ^{9/16} ×44 ^{3/8} | 29 ^{9/10} ×37 ^{3/5} ×49 ^{2/5} | 22 ^{3/4} ×11 | 145 | 180 |
| ATHOM-39 | 6.18 | 115/60/1 | 3/5 | R290 | 5-15P | 38 ^{5/8} ×34 ^{9/16} ×44 ^{3/8} | 41 ^{7/10} ×37 ^{3/5} ×49 ^{2/5} | 34 ^{9/16} ×11 | 200 | 244 |
| ATHOM-60 | 10.27 | 115/60/1 | 3/5 | R290 | 5-15P | 62 ^{1/4} ×34 ^{9/16} ×44 ^{3/8} | 65 ^{2/5} ×37 ^{3/5} ×49 ^{2/5} | 58 ^{3/16} ×11 | 254 | 312 |

PLAN VIEW

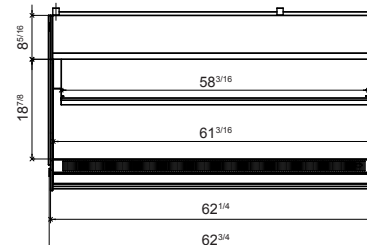
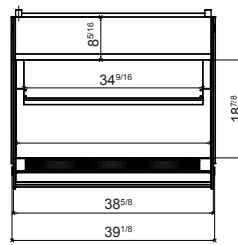
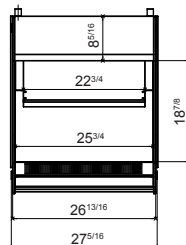
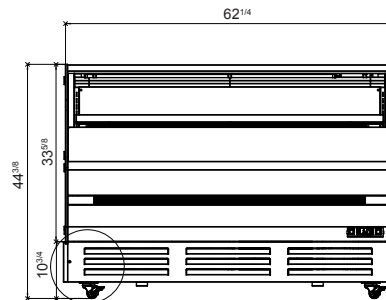
ATHOM-28



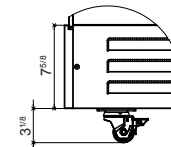
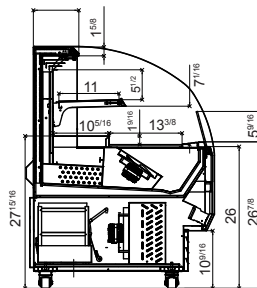
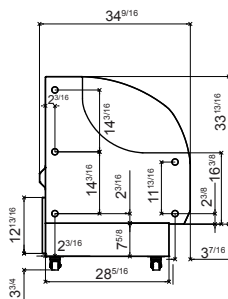
ATHOM-39



ATHOM-60



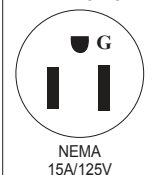
Side View



Electronic Temp. Controller



NEMA 5-15P



NEMA
15A/125V